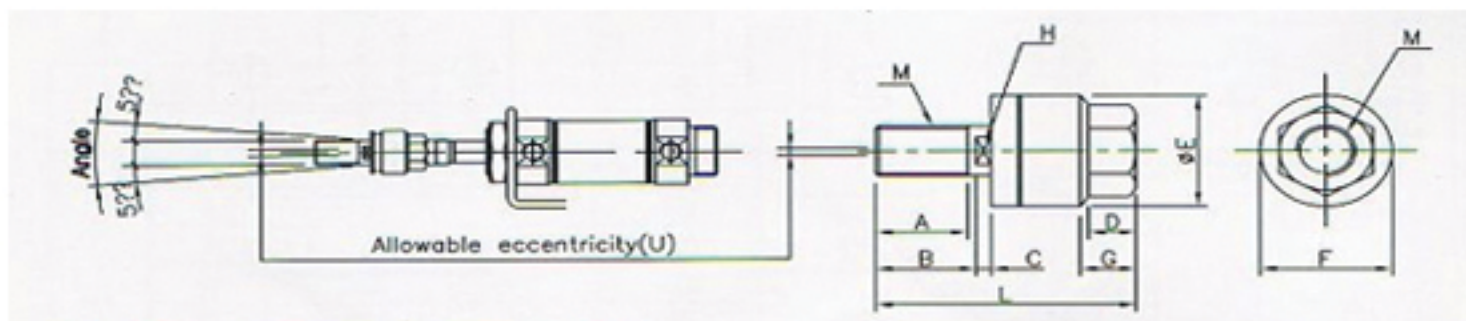


Floating Joint



Product Features

Compensate the accuracy lessened by angular and lateral misalignment.

Accurate cylinder alignment not required.

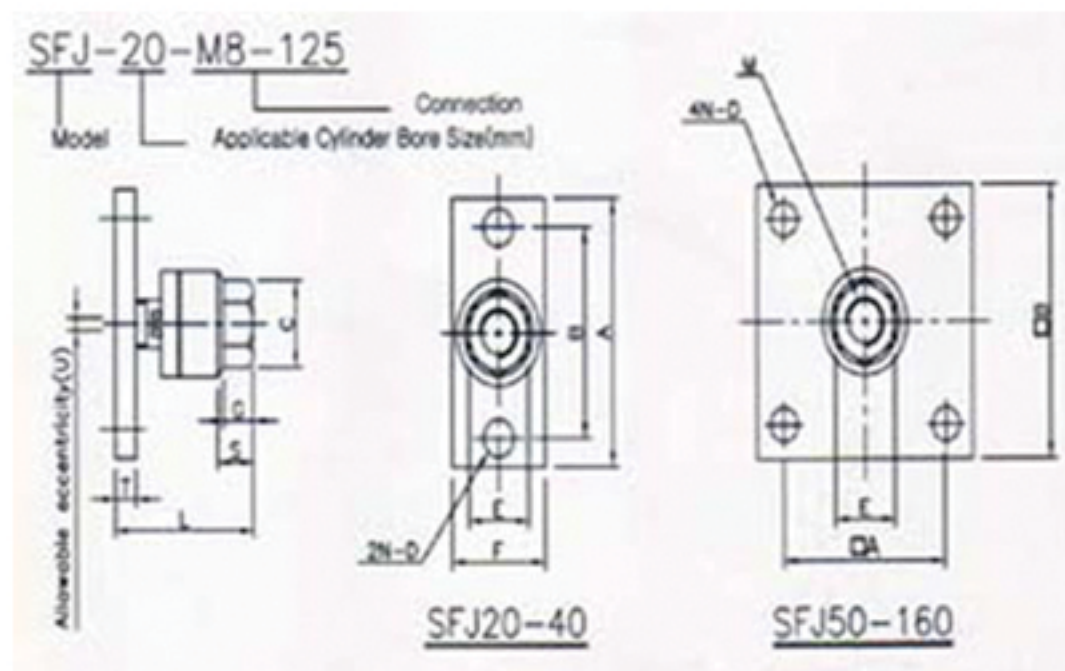
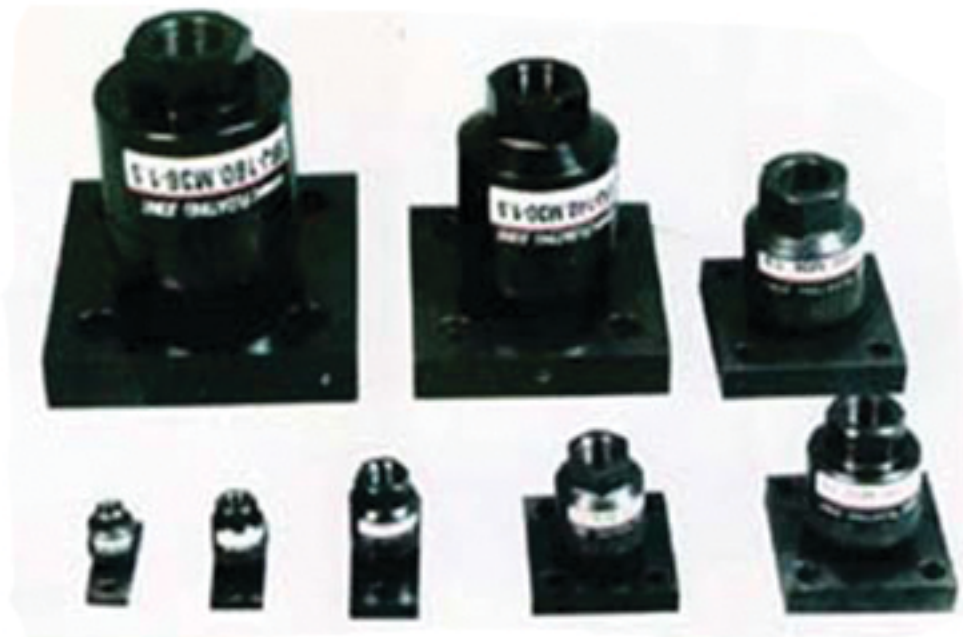
Installation time reduction.

Compact design allows high loading.

SSJ - Series(Standard)

Applicable Bore Size	Model	M	L	A	B	C	D	E	F	G	H	U
10	SSJ-010-M4-070	M4*0.7P	26	9	10	1.5	4	12	7	5	5	0.5
15	SSJ-015-M5-080	M5*0.8P	34.5	12.5	14	2	5	16	10	7	6	0.5
	SSJ-015-M6-100	M6*1.0P	34.5	12.5	14	2	5	16	10	7	6	0.5
20	SSJ-020-M8-125	M8*1.25P	44	15.5	16.5	5	7	21	13	8	7	0.5
	SSJ-020-M8-100	M8*1.0P	44	15.5	16.5	5	7	21	13	8	7	0.5
25.30	SSJ-030-M10-125	M10*1.25P	49	17.5	18.5	5	8	24	17	9	8	0.5
40	SSJ-040-M12-150	M12*1.5P	62	20	22	5	11	31	22	12	11	0.75
	SSJ-040-M14-150	M14*1.5P	62	20	22	5	11	31	22	12	11	0.75
50.63	SSJ-063-M18-150	M18*1.5P	76	25	27	6	13	40	27	14	14	1
80	SSJ-080-M22-150	M22*1.5P	89	27	29	8	16	50	32	17	19	1.25
100	SSJ-100-M26-150	M26*1.5P	110	35	37	8.5	20	59.5	41	24	24	2
125.140	SSJ-140-M30-150	M30*1.5P	153	41.5	44.5	14	22	79	46	30	27	2.5
160	SSJ-160-M36-150	M36*1.5P	179	52	54.5	16	24	96	55	36	32	3

Floating Joint



SFJ - Series(Flange Type)

Applicable Bore Size	Model	M	L	A	B	C	D	E	F	G	U	T	S
20	SFJ-020-M8-125	M08*1.25P	32.5	48	36	21	6.6	13	19	7	0.5	6	8
25.30	SFJ-035-M10-125	M10*1.25P	36	52	40	24	6.6	17	25	8	0.5	6	9
40	SFJ-040-M14-150	M14*1.5P	49	70	52	31	9	22	32	11	0.75	9	12
50.63	SFJ-063-M18-150	M18*1.5P	61.5	65	45	41	9	27	-	13.5	1	12	14
80	SFJ-080-M22-150	M22*1.5P	76.5	75	55	50	11	32	-	16	1.25	16	17
100	SFJ-100-M26-150	M26*1.5P	94	90	65	59.5	11	41	-	20	2	19	24
125.140	SFJ-140-M30-150	M30*1.5P	131	125	82	79	18	46	-	22	2.5	24	30
160	SFJ-160-M36-150	M36*1.5P	152	152	100	96	22	55	-	24	3	29	36